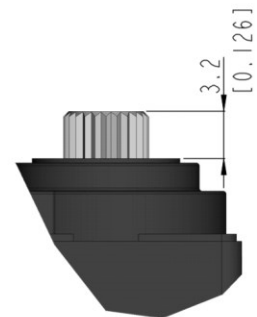
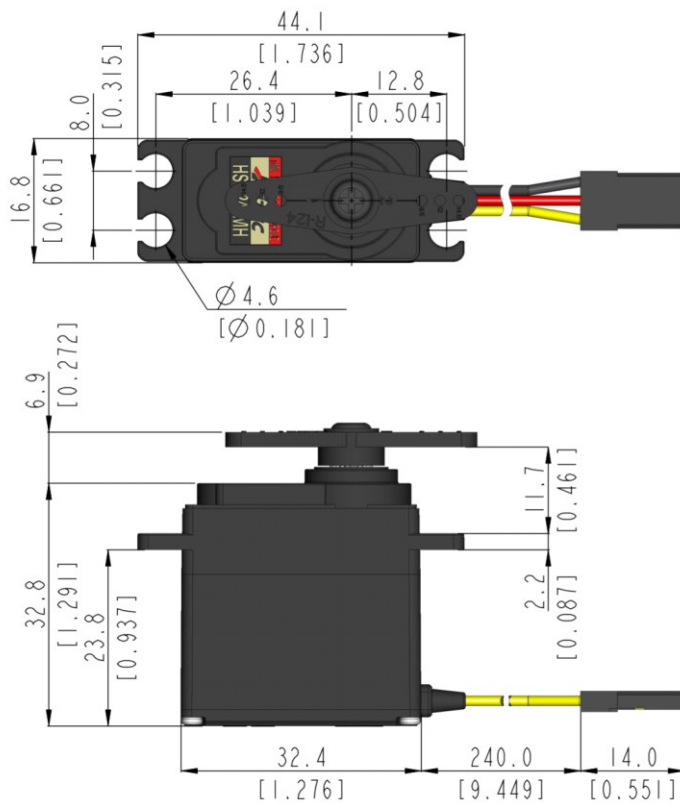


# HS-7245MH General Specification.



Control System	PWM		-
Position Sensor Type	Contact Analog Potentiometer		-
Motor Type	Coreless		At the Max voltage, it is recommended to be used only for a short time duration.
Operating Voltage Range	3.5 ~ 8.4V		
Voltage	-	6.0V	7.4V
No Load Speed	-	0.13sec/60°	0.11sec/60°
Stall Torque	-	5.2kgf-cm (72.2 oz-in)	6.4kgf-cm (88.9 oz-in)
Peak Efficiency Torque	-	1.0kgf-cm (13.9 oz-in)	1.3kgf-cm (18.1 oz-in)
Standing Current	-	10mA	12mA
No Load Running Current	-	150mA	190mA
Stall Current	-	1,300mA	1,600mA
Deadband	-	2μs	2μs
Operating Travel	Default: ±60°, Programmable: Max 175° / Pulse Width: 900~2100μs(Center:1500μs)		Based on resolution normal mode
Continuous Rotation	n/a		-
Operating Temperature Range	-20°C ~ +60°C (-4°F ~ +140°F)		-
Storage Temperature Range	-30°C ~ +80°C (-22°F ~ +176°F)		-
Connector Wire Length	240mm (9.449inch)		 1. SIGNAL 2. VCC 3. GND
Connector Wire Gauge	22AWG		
Dimensions	32.4mm x 16.8mm x 32.8mm (1.276inch x 0.661inch x 1.291inch)		General Tolerance ±0.1mm
Weight	34.0g (1.199oz)		Excluding the weight of Horn
Bearing Type	2 Ball Bearing		-
Case Material	Engineering Plastic		-
Gear Material	1 Metal-Plastic & 3 Metal Gears		-
Gear Train Backlash	Max 0.5°		-
Horn Gear Spline	24T(Ø6)		-
IP-Rating	IP4X		-
Servo Amplifier Type	8bit Programmable Digital		-



1:1 scale (Unit : mm[inch])

- This product should not be used directly on the human body for medical purposes.
- This product should not be used for war weapons.
- All specifications are subject to change without notice.

